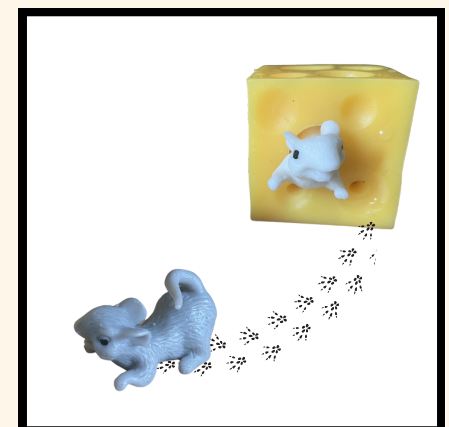
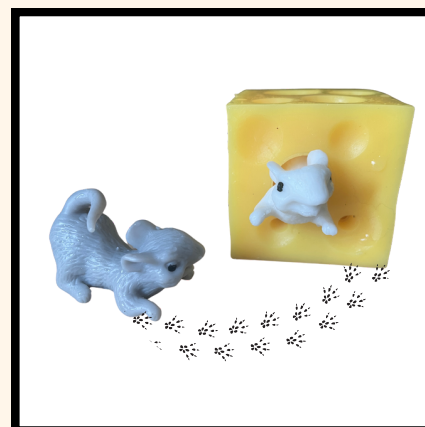
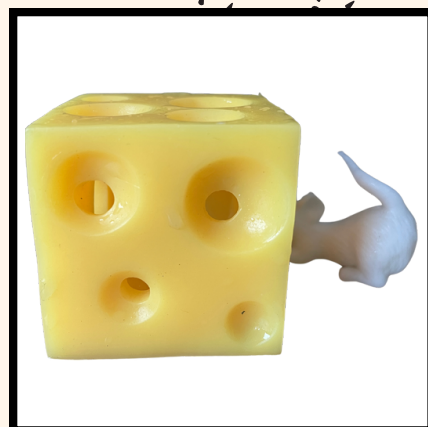
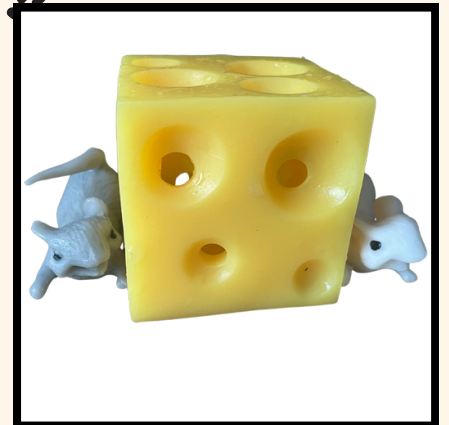
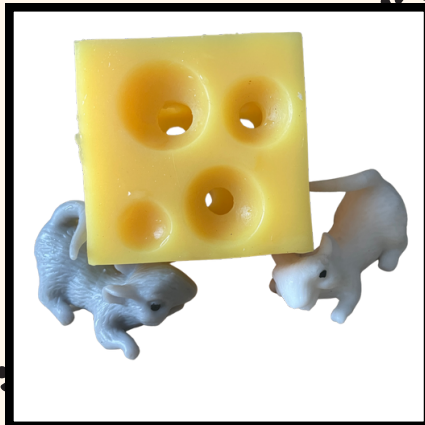
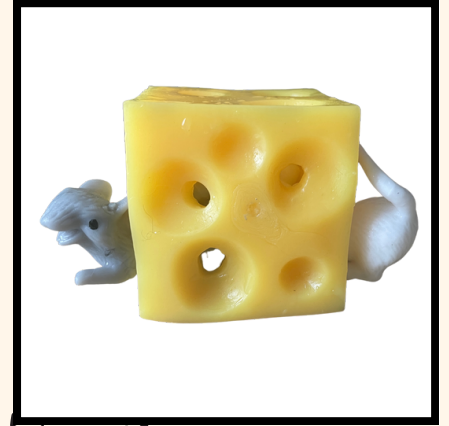
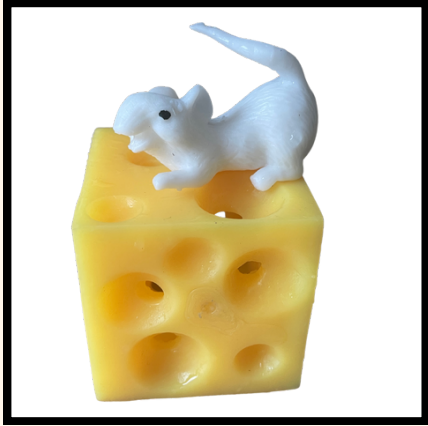
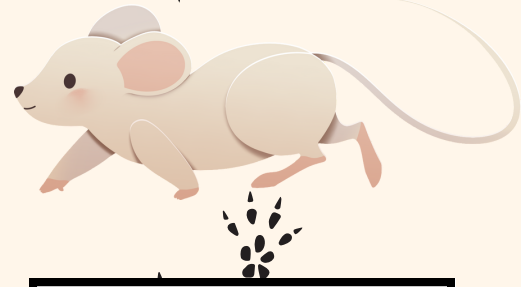


LES PRÉPOSITIONS DE LIEU EN LATIN



IN CASEO

IN + ABLATIF =
SUR

IN CASEO

IN + ABLATIF =
DANS

PER
CASEUM

PER + ACCUSATIF
= À TRAVERS

ANTE
CASEUM

ANTE + ACCUSATIF
= DEVANT

SUB CASEO

SUB + ABLATIF =
SOUS

PROPE
CASEUM

PROPE +
ACCUSATIF =
PRÈS DE

POST
CASEUM

POST +
ACCUSATIF =
DERRIÈRE

AD CASEUM

AD + ACCUSATIF
= VERS

AB CASEO

AB + ABLATIF =
(LOIN) DE