

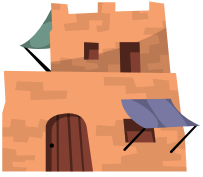


Aleph, le bœuf

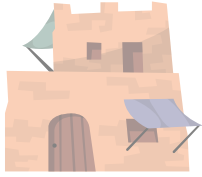


Αα

alpha (άλφα)



Beth, la maison



Ββ

bêta (βήτα)



Ghimeh, le chameau

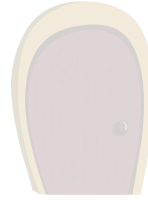
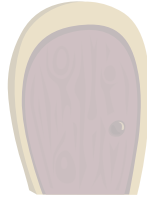


Γγ

gamma (γάμμα)



Daleth, la porte

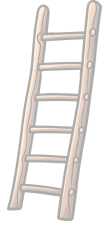
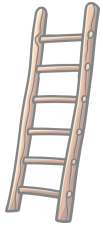


Δδ

delta (δέλτα)

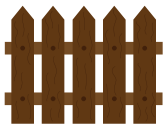


Hé, l'échelle

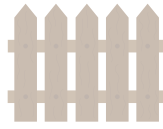
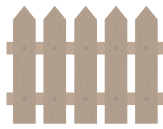


Εε

epsilon (έψιλον)

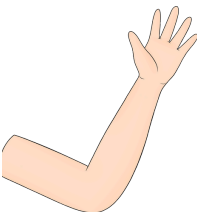


Heth, la barrière

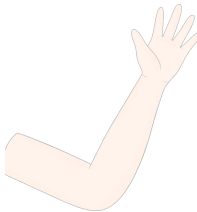
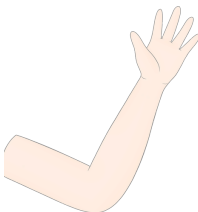


Ηη

êta (ήτα)

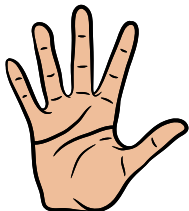


Iod, le bras

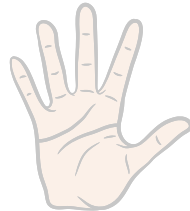
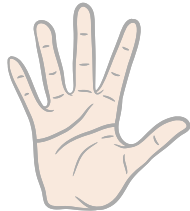
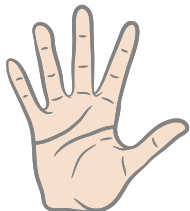


Ιι

iota (ιώτα)



Caph, la main



Κκ

kappa (κάππα)



Lamed, la crosse



Λλ

lambda (λάμβδα)



Mum, l'eau



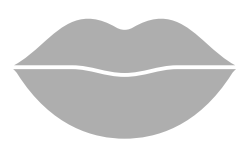
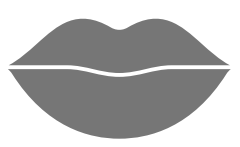
Μμ
mu (μυ)

Nun, le serpent



Νν
nu (νυ)

HgaIn, l'œil



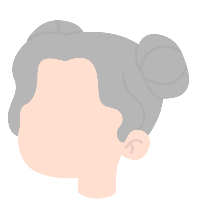
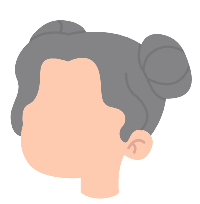
Οο
omicron (όμικρον)

Pè, la bouche



Ππ
pi (πι)

Koph, le singe



Q

Resch, la tête



Ρρ
rho (ρω)

SchIn, la dent



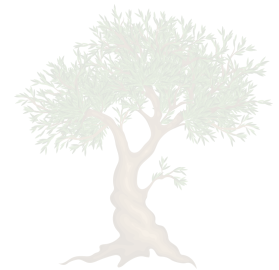
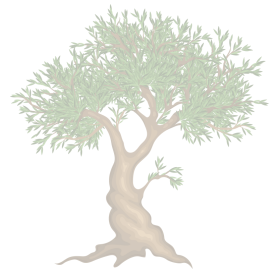
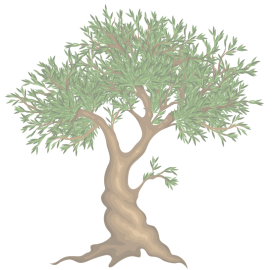
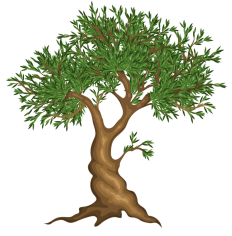
Σσ
sigma (σίγμα)

Tau, la marque



Ττ
tau (ταυ)

Vav, l'appui-tête



Υυ
upsilon (ύψιλόν)

ZaIn, l'olivier

Ζζ
zeta (ζήτα)